

Map  
 showing lines run on  
 Transit Street  
 Scale 40 feet per inch.

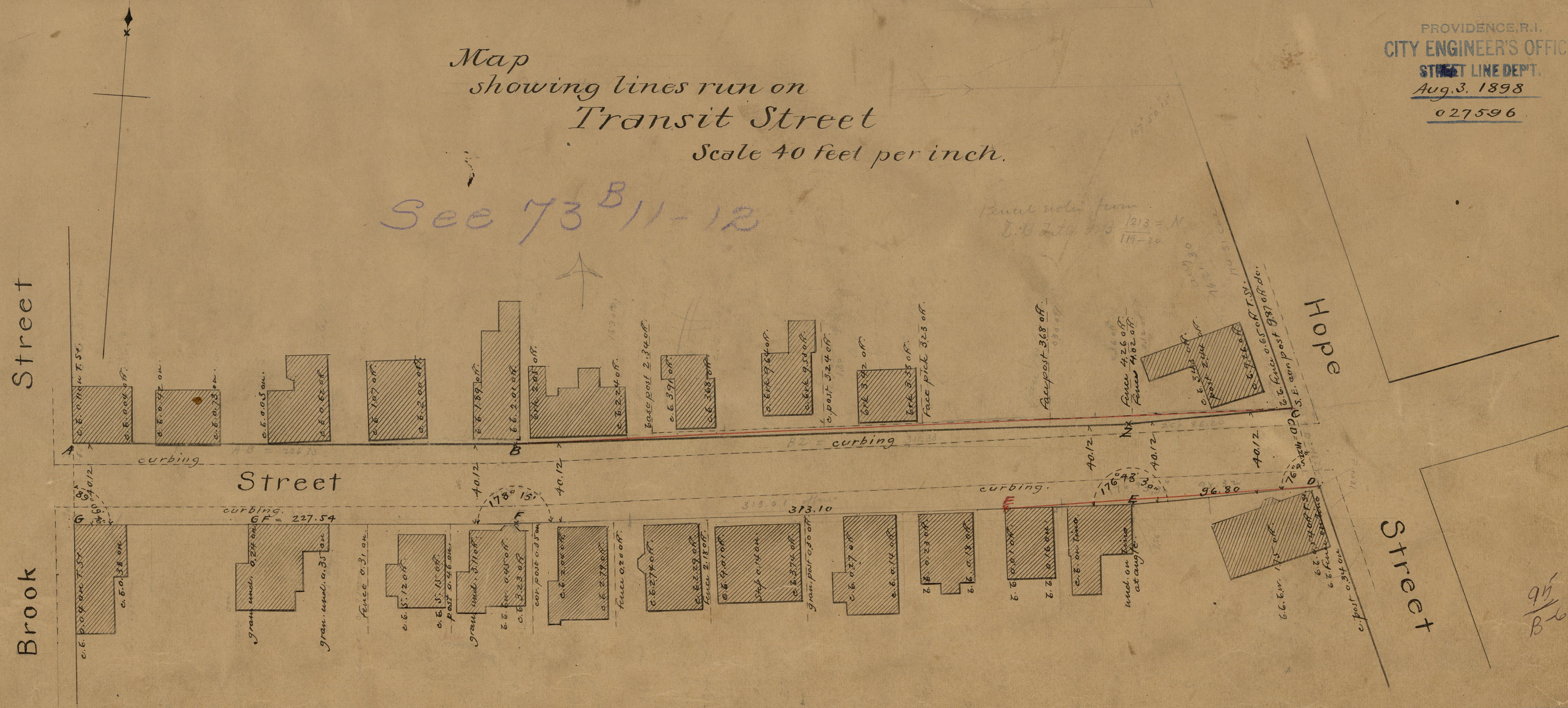
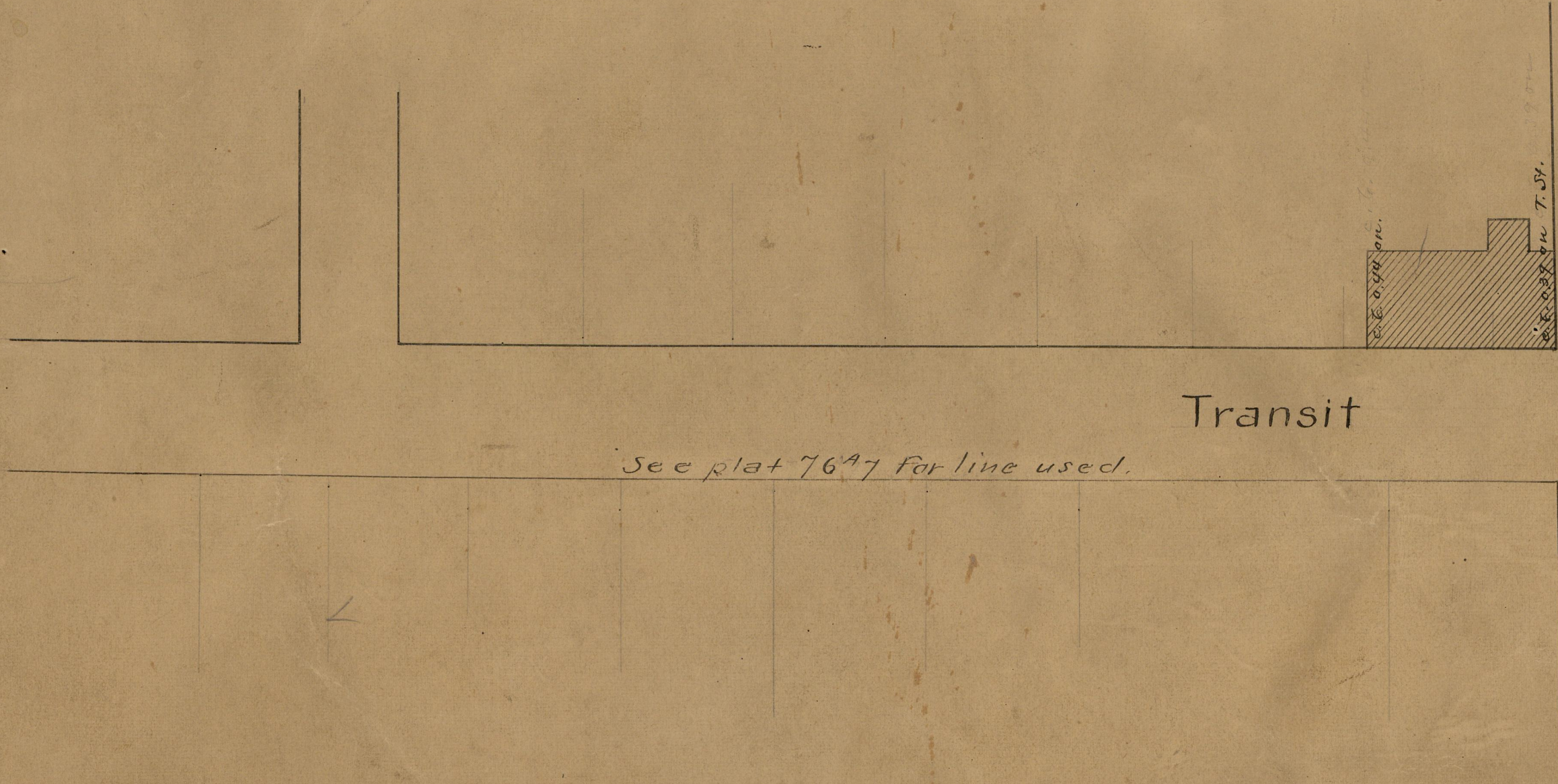
See 73<sup>B</sup> 11-12

Permit notes from  
 D.B. 214 213 = N  
 119-20

Note The lines shown from G to B are in range with corresponding lines of Transit st west of Brook st, as shown on plat 76<sup>A</sup>  
 The other black lines are run to conform nearly to occupation on the southerly side.

If the street should be relaid the changes indicated by the red lines are recommended. Until street is relaid mark approximate lines by black offsets, excepting portion of north side from B to C which should be marked in accordance with the red line.

See plat 76<sup>A</sup> for line used.



95  
 B-61